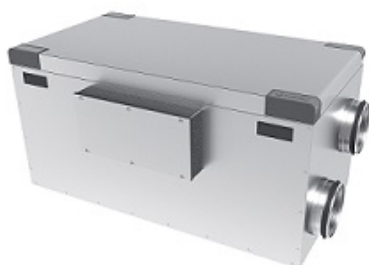


HERU 100 S EC

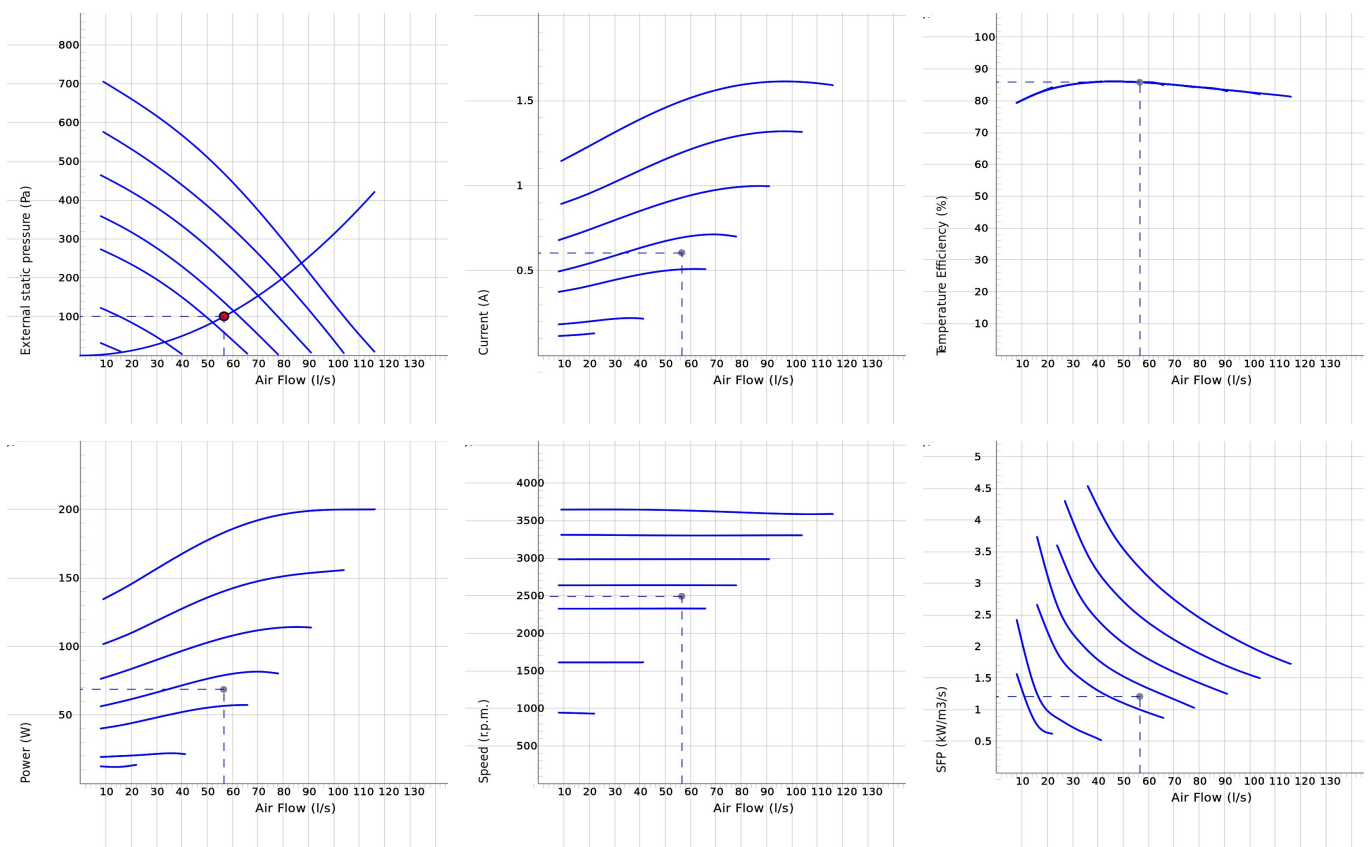


- Model with side connections.
- Designed for supply and extract air ventilation with energy recovery.
- Suitable for installation in apartments, small houses, offices and other premises where there are stringent requirements on the indoor environment.
- High temperature efficiency, low energy consumption (SFP), low sound level, high operating reliability and provides clean indoor air.
- Unique design minimizes all thermal bridges.
- Easy to handle with wireless 4,3" touch-display for operation and monitoring.
- Integrated Modbus communication.
- App controlled via cloud service.
- Easy installation wizard.
- Scheduled operation.
- Supports use of presence sensors.
- Airflow is generated by two silent radial fans with EC motors and impellers with backward curved blades.
- The fans are connected using quick connectors and are very easy to remove for cleaning.
- A regenerative, non-hygroscopic, aluminum rotating heat exchanger located in the center of the unit. The heat exchanger can also be removed for cleaning.
- Comes with bag filter ISO ePM1 65% as standard, for both extract and supply air. The filter is very easy to change.
- Integrated controls for heating/cooling. Increases thermal comfort by heat recovery or night cooling.
- Integrated electric heater.
- The interior of the unit is constructed of galvanized steel sheet. The exterior is made of powder coated galvanized and Aluzink steel sheet. Exterior corrosivity class C4.
- 50 mm insulation.
- For placement in warm or cold areas.
- Comes in right-hand version as standard, but can easily be rebuilt to left-hand design.
- Heru 100S and Heru 160S are equipped with wall plug. Heru 200S and Heru 250S are delivered with cable for fixed installation.
- 3 years warranty in continuous operation.

NOTE!

The warranty of HERU® is only valid if accessories/equipment (e.g. filters) from H. Östberg AB are used.

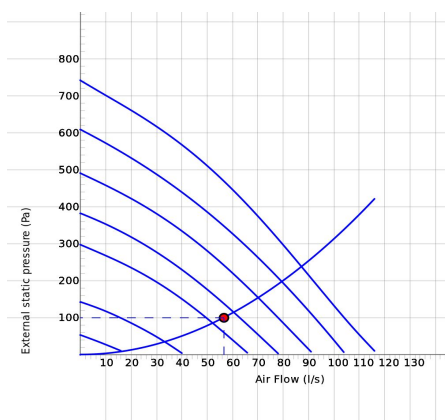
DIAGRAMS



Work Point

Air Flow (l/s)	External static pressure (Pa)	Power (W)	Speed (r.p.m.)	Current (A)	Efficiency (%)	SFP (kW/m ³ /s)	Voltage (V)
56.5	100	68.6	2492	0.605	85.8	1.21	6.53

SOUND DATA



	Tot	63	125	250	500	1k	2k	4k	8k
Supply Lw dB(A)	80	59	64	69	77	73	72	68	59
Extract Lw dB(A)	67	49	55	59	66	54	48	39	19
Surrounding Lw dB(A)	48	40	42	43	40	33	30	28	29
Surrounding Lp dB (A) 3m	41	33	35	36	33	26	23	21	22

Work Point

Air Flow (l/s)	External static pressure (Pa)	Power (W)	Speed (r.p.m.)	Current (A)	Efficiency (%)	SFP (kW/m3/s)	Voltage (V)
87.2	238	68.6	2492	0.605	85.8	1.21	6.53

TECHNICAL DATA

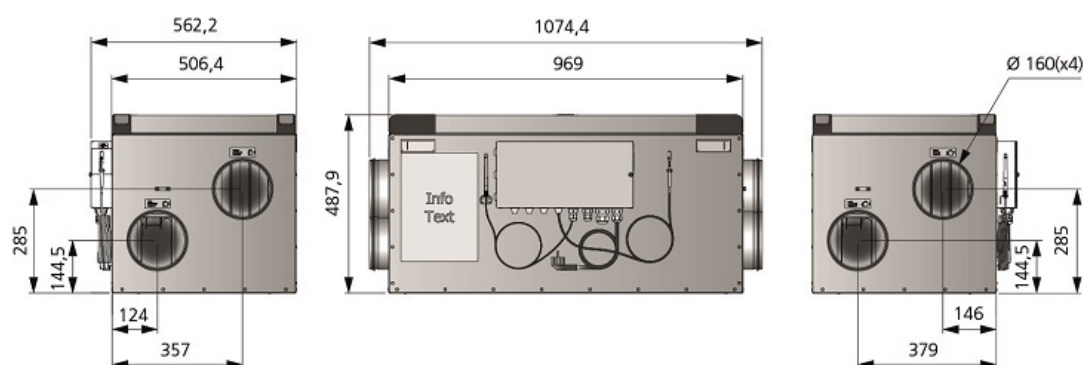
HERU 100 S EC-v1 8010778

Parameter	Value	Unit
Voltage	230	V
Phase	1	~
Frequency	50	Hz
Power	1440	W
Power, fans	209	W
Power, heater	1200	W
Current	6.99	A
Current, fans	1.67	A
Current, heater	5.22	A
Speed	3580	r.p.m.
Sound pressure level at 3 m	41	dB(A)
Weight	64.8	kg
Enclosure class	41	IP
Duct connection	160	mm
Max. flow	113	l/s
Max. pressure	710	Pa
Voltage range	220-240	V

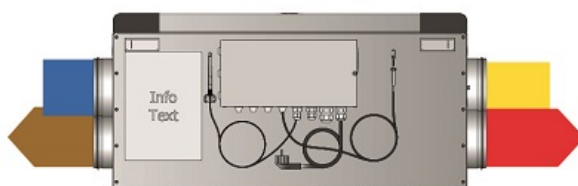
ECODESIGN

Parameter	Value	Unit
(a) Manufacturer	Östberg	-
(b) Model code	HERU 100 S EC	-
(c) SEC value	-40.3	kWh/m ²
(d) Declared type	RVU / BVU	-
(e) Type of drive	Variable speed drive	-
(f) Type of heat recovery	Regenerative	-
(g) Thermal efficiency	85	%
(h) Max. flow rate (@100Pa)	374	m ³ /h
(i) Power at max. flow rate	200	W
(j) Sound power level	42	dB LwA
(k) Reference flow rate	0.073	m ³ /s
(l) Reference pressure difference	50	Pa
(m) SPI	0.39	W/(m ³ /h)
(n) Type of control	Local demand control	-
(o) External (and internal) leakage rate	2.2 (2)	%
(p) Mixing rate	N/A	-
(q) Visual filter warning	On display	-
(r) Instruction supply/exhaust grilles	See manual	-
(s) Disassembly instructions	fsp.ostberg.com	-
(t) Airflow sensitivity	N/A	-
(u) Air tightness	N/A	m/s
(v) AEC	252	kWh
(w) AHS average	4618	kWh
AHS warmer	2088	kWh
AHS colder	9034	kWh

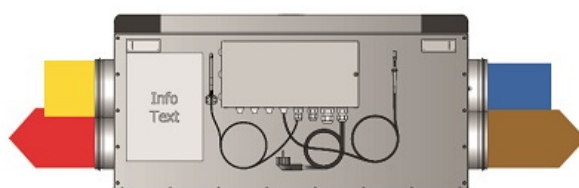
DIMENSIONS



RIGHT-HAND DESIGN



LEFT-HAND DESIGN



ACCESSORIES

Electrical accessories



Humidity sensor RH



Carbon dioxide
sensor CO2



Room sensor



Pressure Sensor Kit



Heater Kit Water,
HERU 50/75/100 S



Freeze protection
sensor



Duct sensor



Damper motor



Relay pump control

Mechanical accessories



Outside wall hood
160



Filter Kit HERU
50/75/90/100 S



Filter HERU
50/75/90/100 S



Silencer LDC 160